

ROYAL RIVER YARMOUTH, MAINE AQUATIC ECOSYSTEM RESTORATION STUDY

CONTINUING AUTHORITIES PROGRAM
SECTION 206

REAL ESTATE UPDATE
OCTOBER 10, 2024

New England District,
U.S. Army Corps of Engineers



U.S. ARMY

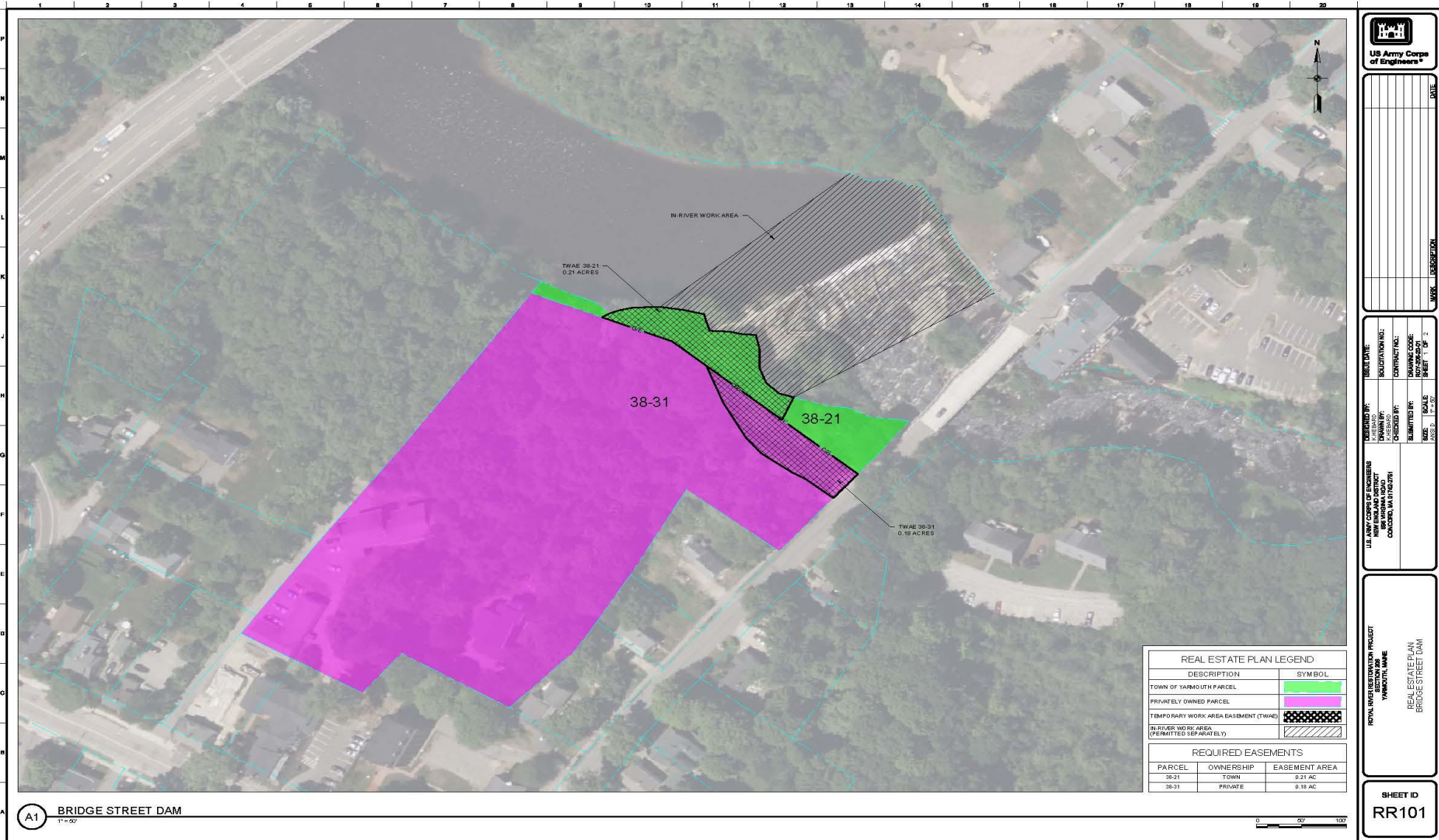


US Army Corps
of Engineers®
New England District





REAL ESTATE STATUS (BRIDGE ST SITE PLAN)





REAL ESTATE STATUS (BRIDGE STREET DAM)



The Tentatively Selected Plan has the following components:

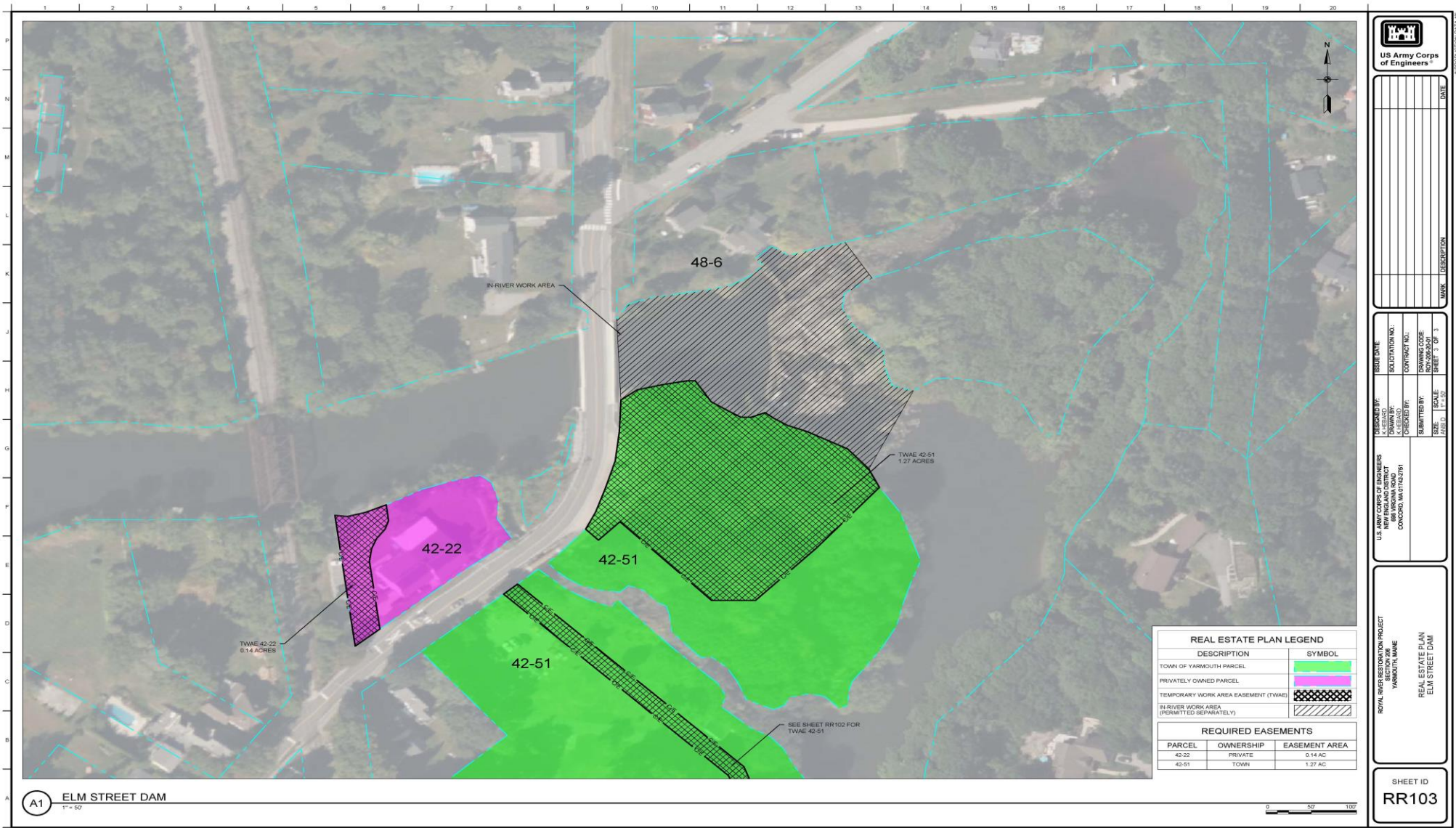
- Bridge Street Dam. Two temporary work area easements are required for a period of three years over public and privately owned lands.

Scope of Work Includes:

- Removal of the dam structure across the entire width of the river (approximately 275 linear feet)
- Removal of the entire fish ladder on the right descending bank (looking downstream towards mouth of river)
- Protection of the penstock and associated intake structure on the left descending bank (looking downstream towards mouth of river)



REAL ESTATE STATUS (ELM ST SITE PLAN)





REAL ESTATE STATUS (ELM STREET DAM)



The Tentatively Selected Plan has the following components:

- Two temporary work area easements are required for a period of three years over public and privately owned lands. Sponsors parcel 42-51 shares work areas with Middle Falls.

Scope of Work Includes:

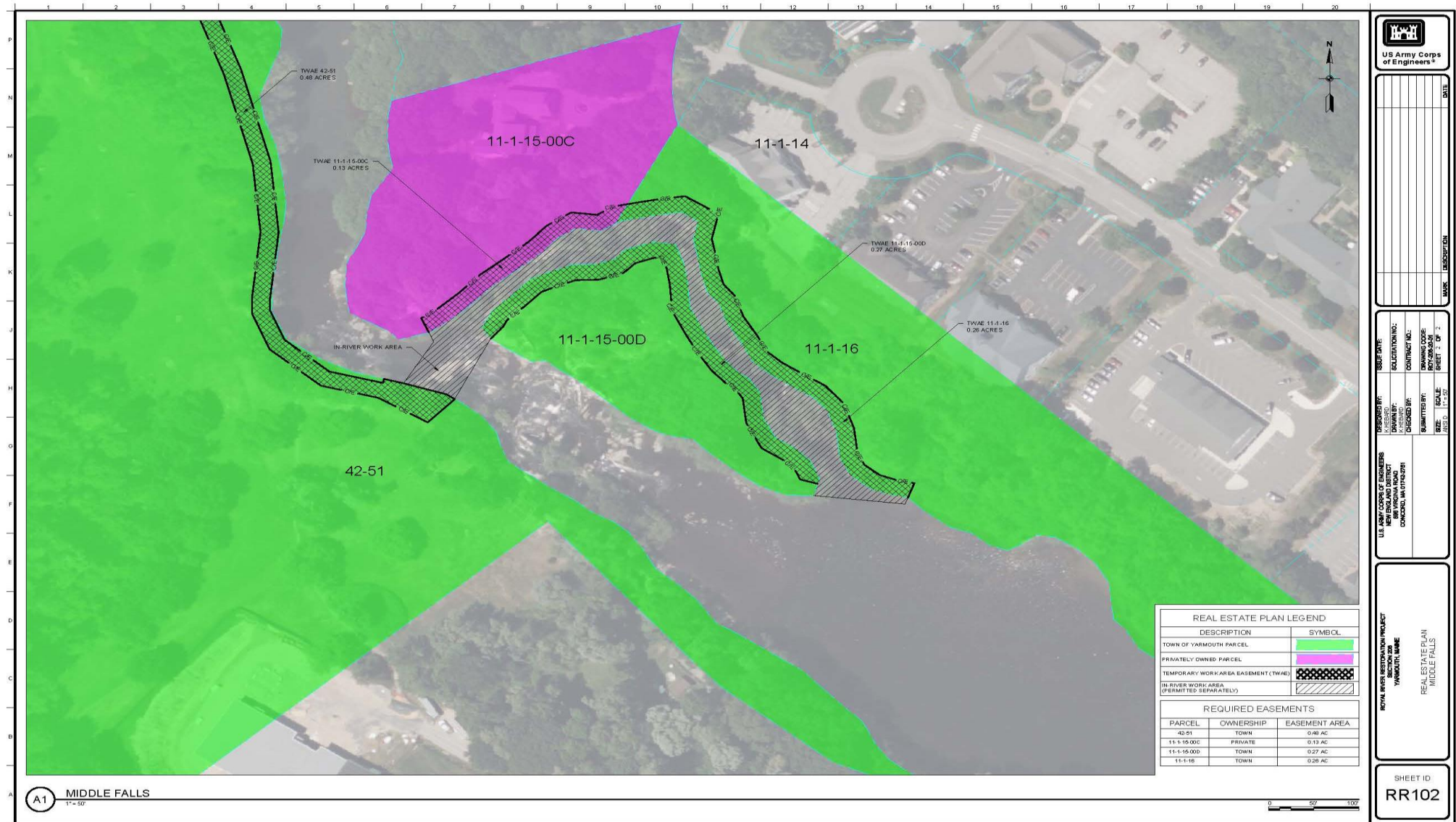
- Removal of an approximately 120 linear foot section of the dam
- Removal of entire fish ladder on the right descending bank (looking downstream towards mouth of river)
- Protection of the dam spillway on the left descending bank (looking downstream towards mouth of river)



REAL ESTATE STATUS (MIDDLE FALLS SITE PLAN)



6





REAL ESTATE STATUS (MIDDLE FALLS)



7

The Tentatively Selected Plan has the following components:

- Four temporary work area easements are required for a period of three years over public and privately owned lands. Sponsors parcel 42-51 shares work areas with East Elm Street.

Scope of Work Includes:

- Installation of diversion structure (boulders) at the top of Middle Falls to divert streamflow into the side channel
- Flow in the side channel will be monitored for capacity to pass fish and additional interventions may be executed as part of an adaptive management plan





REAL ESTATE STATUS (TEMPORARY WORK AREA EASEMENT TEMPLATE)



A temporary easement and right-of-way in, on, over and across (Tract Nos. _____, _____ and _____), for a period not to exceed three years, beginning with date possession of the land is granted to the United States, for use by the United States, its representatives, agents, and contractors as a work area, including the right to move, store and remove equipment and supplies, and erect and remove temporary structures on the land and to perform any other work necessary and incident to the construction of the Royal River Section 206 Project, together with the right to trim, cut, fell and remove therefrom all trees, underbrush, obstructions, and any other vegetation, structures, or obstacles within the limits of the right-of-way; reserving, however, to the landowners, their heirs and assigns, all such rights and privileges as may be used without interfering with or abridging the rights and easement hereby acquired; subject, however, to existing easements for public roads and highways, public utilities, railroads and pipelines.